



# MAGINA'S

— RESTAURANTE SNACK-BAR —

GREAT FOOD, AMONG FAMILY



# STARTERS

 Rose Wine, White Wine Dry and Complex, Sparkling Wine or Champagne



## HOT STARTERS

MAGI'S PRAWNS	9.00
SAILOR STYLE MUSSELS	8.00
BROKEN EGGS	7.50
CRISPY FRIED CHICKEN TENDERS	7.00
SEAFOOD SOUP	3.50

## CLASSIC STARTERS

MAGI'S BOARD (TO SHARE)	12.50
SQUID WITH SALSA VERDE	6.50
MIX OF MINI PORTUGUESE CROQUETTES	3.00
GARLIC BREAD	2.50
TUNA PATE AND OLIVES	1.50
ARTISAN BREAD BASKET	1.20



VAT INCLUDED



# MEDITERRANEAN MENU



## SALADS

 Rose Wine, White Wine Dry, Red Wine Young

**CAESER SALAD** 10.00  
Crispy Chicken, Lettuce, Rocket,  
Cherry Tomatoes, Orange,  
Croutons and Caeser Sauce

**PRAWN SALAD** 10.00  
Crispy Prawn, Lettuce, Rocket,  
Cherry Tomatoes, Pineapple,  
Orange and Cocktail Sauce

## PASTA

 Rose Wine, White Wine Dry or Young and  
Fruity or Red Wine Young

**PRAWNS W/BLACK LINGUINI** 11.00  
**CLASSIC HOMEMADE**  
**LASAGNA** 9.00  
**ULTIMATE SPAGHETTI**  
**CARBONARA** 8.00

## RISOTTO

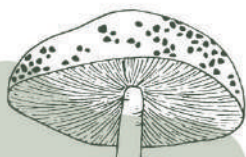
 Rose wine, White Wine Dry or Sparkling Wine

**SHRIMP RISOTTO** 13.00  
**MUSHROOM RISOTTO** 11.00

## PIZZA'S

 Rose Wine or Beers

**PRAWNS AND PINEAPPLE** 11.00  
**TUNA AND BOILED EGG** 10.00  
**VEGETARIAN** 10.00  
**PEPPERONI** 9.00  
**BACON AND ROCKET** 9.00  
**HAM** 8.00



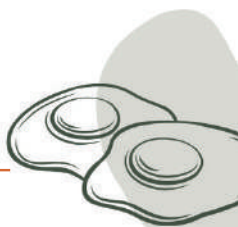
VAT INCLUDED



# FROM OUR GRILL

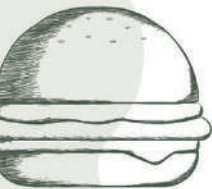


Rose wine, White Wine Dry or Beers



## UNIQUE AND SURPRISING

FRANCESINHA WITH PRAWNS	14.00
"FRANCESINHA À MAGI"	14.00
"PICA-PAU À MAGI"	14.00
MAGI'S ULTIMATE BURGER	14.00
MAGI'S CLASSIC BURGER	8.50
CHICKEN WRAP	8.00
MAGI'S HOTDOG	7.00
PORTUGUESE RIB STEAK SANDWICH	5.00



## CLASSIC AND IRRESISTIBLE

TRADITIONAL "FRANCESINHA"	9.00
"FRANCESINHA" WITH CHICKEN	9.00
TRADITIONAL SIRLOIN STEAK ON PLATE	8.50
GRILLED CHICKEN BREAST STEAK	7.00
BURGER ON PLATE	7.00
"ALHEIRA" (CLASSIC PORT. SAUSAGE)	6.50
SPECIAL HOT DOG	5.50
SPECIAL HAM AND CHEESE TOAST	5.50
SIMPLE HOTDOG	3.50

## OMELETTE

HAM AND CHEESE OMELETTE	6.50
JUST HAM OU CHEESE OMELETTE	6.00
PARSLEY AND ONION OMELETTE	5.50
PLAIN OMELETTE	5.00

## SIDES

FRENCH FRIES	1.50
FRIED EGG	1.00

EXCLUSIVE GRILL  
INDIVIDUAL DOSE



## CHILD MENU

MINI BURGER / SAUSAGE /  
SIRLOIN STEAK  
(WITH WHITE RICE,  
FRENCH FRIES  
AND FRIED EGG)

6.00

VAT INCLUDED



# CHEF'S MENU



## FISH



Rose Wine, White Wine Dry and Complex, White Wine Young and Fruity, Red Wine Young and Easy to Drink, Red Wine Brawny and Full-Bodied or Beers



WILD TIGER PRAWN IN GARLIC BUTTER	(kg)	85.00
MAGI'S FRIED COD	18.00	3550
COD WITH PORTUGUESE CORNBREAD	18.00	3550
SEA BASS RICE	18.00	3550
PORTUGUESE "CATAPLANA" (FISH AND SEAFOOD STEW)		32.00
BATTERED HAKE	11.00	2150

## MEAT



Rose Wine, White Wine Dry and Complex, Red Wine Young and Easy to Drink, Red Wine Brawny and Full-Bodied or Beers

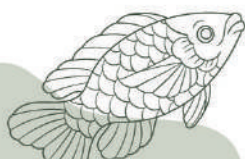


Caipirinha



TOMAHAWK STEAK		55.00
MAGI'S BEEF TENDERLOIN		35.00
"PICANHA" RUMP STEAK	18.00	3550
RED VEAL CHOP ON WOODEN BOARD		30.00
IBERIAN PORK LOIN WITH BACON AND SLICED APPLE	13.00	2550

VAT INCLUDED



# DESSERTS



## BEST-SELLERS

OREO COOKIE MOUSSE WITH FRESH BERRIES	3.30
FRENCH STYLE PUDDING	3.30
PASSION FRUIT MOUSSE	3.30
CHEESECAKE	3.30
CHOCOLATE MOUSSE	3.30
"NATAS DO CÉU"	3.30
LIME MOUSSE	3.30
COOKIE WITH SALTED PEANUT CARAMEL MOUSSE	3.30

## TRADITIONAL

MIX OF TROPICAL AND IN SEASON SLICED FRUIT	12.00
CHEESE BOARD	12.00
WHISKEY ICE TART	4.50
CARAMEL ICE TART	4.50
SLICED TROPICAL FRUIT 1 UNI.	4.00
CHEESE AND MARMALADE	3.50
VIENETTA ICE TART	3.00
HARIBO PUSH ICE CREAM	2.50
IN SEASON SLICED FRUIT 1 UNI.	2.00
ICE CREAM CUP	2.00



VAT INCLUDED



# WHITE WINE

 0,75CL



QUINTA DA PEDRA <b>VINHO VERDE</b> ALVARINHO	40,00
TIAGO CABAÇO VINHAS VELHAS <b>ALENTEJO</b> ROUPEIRO/ ARINTO/ ANTÃO VAZ	26,00
BELLA SUPERIOR <b>DÃO</b> SAUVIGNON BLANC	24,00
ADEGA 23 <b>BEIRA</b> VERDELHO/ ARINTO/ SÍRIA/ VIOGNIER	22,00
VINHA DE SANTA MARIA GRANÍTICO <b>DÃO</b> ENCRUZADO	22,00
BÉTULA <b>DOURO</b> SAUVIGNON BLANC/ VIOGNIER	22,00
COLINAS <b>BAIRRADA</b> CHARDONNAY	22,00
LONGOS VALES <b>VINHO VERDE</b> ALVARINHO	20,00
QUINTA DO PERDIGÃO <b>DÃO</b> ENCRUZADO	20,00
3 BAGOS RESERVA <b>DOURO</b> VIOSINHO/ GOUVEIO/ RABIGATO	18,00
CASA DO BARROSO RESERVA <b>VINHO VERDE</b> ALVARINHO	18,00
QTA. CASTELARES RESERVA <b>DOURO</b> CÓDEGA/ RABIGATO/ GOUVEIO	18,00
MUROS ANTIGOS <b>VINHO VERDE</b> ALVARINHO	18,00
RIBEIRO SANTO <b>DÃO</b> ENCRUZADO	18,00
PALATO DO CÔA <b>DOURO</b> RABIGATO/ CÓDEGA/ VIOSINHO	16,00
ENCOSTA DO GUADIANA <b>ALENTEJO</b> ANTÃO VAZ/ VERDELHO	16,00
QUINTA DO PORTAL <b>DOURO</b> MOSCATEL GALEGO	16,00
MORPHOSIS <b>DOURO</b> VIOSINHO/ VERDELHO/ RABIGATO	16,00
VALLADO <b>DOURO</b> RABIGATO/ CÓDEGA/ VIOSINHO/ GOUVEIO/ ARINTO	16,00
NOVAS ROTAS <b>DOURO</b> RABIGATO/ VIOSINHO / CÓDEGA	16,00
SANTA CRISTINA <b>VINHO VERDE</b> ALVARINHO/ TRAJADURA	14,00
QUILATE <b>DOURO</b> VIOSINHO/ GOUVEIO/ CERCIAL	14,00
MONTE CASCAS <b>DOURO</b> CÓDEGA/ GOUVEIO/ VIOSINHO	14,00
HERDADE DA AJUDA <b>ALENTEJO</b> ARINTO	14,00
QUINTA D'AMARES <b>VINHO VERDE</b> ALVARINHO/ LOUREIRO	12,00
CALHEIROS CRUZ <b>DOURO</b> VIOSINHO/ GOUVEIO/ RABIGATO	12,00
CASA DE VILACETINHO <b>VINHO VERDE</b> LOUREIRO/ AVESSO/ AZAL/ ARINTO	12,00
MONTE DA CAL <b>ALENTEJO</b> VIOGNIER/ ALVARINHO/ ARINTO/ ANTÃO VAZ	10,00
RAPA LOBOS <b>DOURO</b> GOUVEIO/ RABIGATO/ MOSCATEL	10,00
SANTA EULÁLIA PLAINAS <b>VINHO VERDE</b> AZAL/ ARINTO	10,00



VAT INCLUDED





# ROSE WINE



SEQUEIRA ROSADO <b>DOURO</b> TINTA AMARELA/ TINTA RORIZ/ TOURIGA FRANÇA/ BASTARDO	26,00
QUINTA DO CRASTO <b>DOURO</b> TOURIGA NACIONAL/ TINTA RORIZ	18,00
POUSIO SELECTION <b>ALENTEJO</b> TRINCADEIRA/ ARAGONÉZ/ TOURIGA NACIONAL	14,00
MATÉUS <b>DOURO</b> BAGA/ RUFETE/ TINTA BARROCA/ TOURIGA FRANÇA	10,00

# RED WINE



HERDADE DA AJUDA <b>ALENTEJO</b> PETIT VERDOT	30,00
TIAGO CABAÇO VINHAS VELHAS <b>ALENTEJO</b> ARAGONÉS/ TRINCADEIRA/ ALICANTE BOUSCHET	26,00
ADEGA 23 <b>BEIRA</b> SYRAH/ ALICANTE/ BOUSCHET/ TOURIGA NACIONAL, ARAGONEZ/ RUFETE	24,00
MORPHOSIS <b>DOURO</b> VINHAS VELHAS	22,00
VALLADO SUPERIOR <b>DOURO</b> TOURIGA NACIONAL/ TOURIGA FRANÇA/ SOUSÃO	22,00
QUINTA DE LEMOS DONA LOUISE <b>DÃO</b> TOURIGA NACIONAL/ TINTA RORIZ/ JAEN	22,00
QUILATE RESERVA <b>DOURO</b> TOURIGA FRANÇA	20,00
BELLA SUPERIOR <b>DÃO</b> TOURIGA NACIONAL	20,00
QUINTA DO CRASTO <b>DOURO</b> TOURIGA FRANÇA/ TOURIGA NACIONAL/ TINTA RORIZ/ TINTA BARROCA	18,00
POUSIO RESERVA <b>ALENTEJO</b> ALICANTE BOUSCHET/ TOURIGA NACIONAL/ SYRAH	18,00
BOANGO <b>DOURO</b> TOURIGA FRANÇA/ TINTA RORIZ/ TINTA BARROCA	18,00
QUINTA DO PERDIGÃO <b>DÃO</b> TOURIGA NACIONAL/ TINTA RORIZ/ JAEN/ ALFROCHEIRO	18,00
PALATO DO CÔA <b>DOURO</b> TOURIGA FRANÇA/ TOURIGA NACIONAL/ TINTA RORIZ	16,00
ENCOSTA DO GUADIANA <b>ALENTEJO</b> ALICANTE BOUSCHET	16,00
VALLADO <b>DOURO</b> TOURIGA FRANÇA/ TOURIGA NACIONAL/ TINTA RORIZ/ SOUSÃO/ VINHAS VELHAS	16,00

VAT INCLUDED





# RED WINE

 0,75CL



QUINTA DO PORTAL <b>DOURO</b> TOURIGA NACIONAL/ TINTA RORIZ/ TOURIGA FRANÇA	16.00
CARLOS REYNOLD'S <b>ALENTEJO</b> ALICANTE BOUSCHET/ ARAGONÉZ/ ALFROCHEIRO/ TRINCADEIRA	16.00
NOVAS ROTAS <b>DOURO</b> TOURIGA FRANÇA/ TOURIGA NACIONAL/ TINTA RORIZ/ TINTA BRANCA	16.00
QUINTA DA TERRINCHA <b>DOURO</b> TINTA RORIZ/ TOURIGA FRANÇA/ TOURIGA NACIONAL	14.00
QUINTA DOS CASTELARES <b>DOURO</b> TINTA RORIZ/ TOURIGA FRANÇA/ TOURIGA NACIONAL	14.00
MONTE CASCAS <b>ALENTEJO</b> TOURIGA NACIONAL/ ARAGONEZ/ TINTA RORIZ/ ALICANTE BOUSCHET	14.00
ESTEVA <b>DOURO</b> TINTA RORIZ/ TINTA BARROCA/ TOURIGA FRANÇA/ TOURIGA NACIONAL	12.00
CALHEIROS CRUZ <b>DOURO</b> TINTA RORIZ/ TOURIGA FRANÇA/ TOURIGA NACIONAL	12.00
MONTE DA CAL <b>ALENTEJO</b> ARAGONEZ/ TRINCADEIRA/ PETIT VERDOT/ ALICANTE BOUSCHET	10.00
RAPA LOBOS <b>DOURO</b> TOURIGA NACIONAL/ TINTA RORIZ/ TOURIGA FRANÇA	10.00

# 1/2 BOTTLE

QUINTA DO CRASTO TINTO <b>DOURO</b> TOURIGA NACIONAL/ TINTA RORIZ/ TOURIGA FRANÇA/ TINTA BARROCA	10.00
S. LOURENÇO BRANCO <b>BAIRRADA</b> CHARDONNAY/ SAUVIGNON BLANC/ ARINTO	8.50
ESTEVA <b>DOURO</b> TINTA RORIZ/ TINTA BARROCA/ TOURIGA FRANÇA/ TOURIGA NACIONAL	6.50
HERDADE DA AJUDA TINTO <b>ALENTEJO</b> SYRAH,/ CABERNET SAUVIGNON/ ARAGONÉS/ ALICANTE BOUSCHET E TRINCADEIRA	5.00
HERDADE DA AJUDA BRANCO <b>ALENTEJO</b> ARINTO/ SAUVIGNON BLANC/ SEMILLON	5.00



VAT INCLUDED



# FOR SPECIAL MOMENTS



 0,75CL



BARCA VELHA 2008 DOURO TOURIGA FRANCA/ TOURIGA NACIONAL/ TINTA RORIZ/ TINTO CÃO	850.00
DOM BELLA DÃO PINOT NOIR	80.00
ENCOSTA DO GUADIANA WINEMAKERS PRIVATE 2017 TINTO ALENTEJO ALICANTE BOUSCHET, TOURIGA NACIONAL, SYRAH	60.00
QUINTA DO CRASTO RESERVA TINTO 2014 DOURO VINHAS VELHAS (25 A 30 CASTAS DIFERENTES)	60.00
REYNOLD'S GRANDE RESERVA TINTO 2012 ALENTEJO ALICANTE BOUSCHET/ SYRAH/ TRINCADEIRA	50.00
UDACA TINTO GARRAFEIRA 1989 DÃO VINHO DE CASAMENTO DO DUQUE DE BRAGANÇA D. DUARTE PIO	40.00
COLINAS RESERVA TINTO 2010 BAIRRADA TOURIGA NACIONAL/ CABERNET SAUVIGNON/ MERLOT	45.00
COLINAS RESERVA TINTO 2011 BAIRRADA TOURIGA NACIONAL/ CABERNET SAUVIGNON/ MERLOT	40.00
COLINAS RESERVA TINTO 2012 BAIRRADA TOURIGA NACIONAL/ MERLOT/ CABERNET SAUVIGNON 11,53	35.00

## SPARKLING WINE & CHAMPAGNE

RUIART BRUT CHAMPAGNE CHARDONNAY/ PINOT NOIR	90.00
MOET CHANDON ROSE IMPERIAL CHAMPAGNE NOIR/ CHARDONNAY/ MEUNIER	80.00
DRAPPIER BLANC DE BLANCS CHAMPAGNE CHARDONNAY/ BLANC VRAI	80.00
DRAPPIER CARTE D'OR CHAMPAGNE NOIR/ CHARDONNAY/ MEUNIER	60.00
COLINAS BLANC DE BLANCS BAIRRADA CHARDONNAY	50.00
COLINAS CUVÉE BRUT NATURE BAIRRADA CHARDONNAY	30.00
MURGANHEIRA RESERVA MEIO SECO/DOCE TÁVORA/ VAROSA MALVASIA FINA/ CHARDONNAY/ CERCEAL/ PINOT NOIR/ TINTA RORIZ/ TOURIGA NACIONAL	18.00
MURGANHEIRA RESERVA BRANCO BRUTO TÁVORA/ VAROSA MALVASIA FINA/ CERCEAL/ GOUVEIO REAL	18.00

VAT INCLUDED



# DRINKS & COCKTAILS



## COCKTAILS

GIN BULLDOG	8.00
GIN GORDONS PINK	7.00
GIN TANQUERAY	7.00
PORTO TÓNICO	6.00
DAIQUIRI	6.00
EXPRESSO MARTINI	5.00
CAIPIRINHA	5.00
MOJITO	5.00
COPO LOCO (NO ALCOHOL)	5.00

## BEERS - CUP

ESTRELLA DAMM 0.20CL	1.60
ESTRELLA DAMM 0.33CL	1.80
ESTRELLA DAMM 0.50CL	2.50
BOCK DAMM 0.20CL	1.70
BOCK DAMM 0.33CL	1.90
BOCK DAMM 0.50CL	2.60

## BEERS - BOTTLE

INEDIT 0.75CL	9.50
SOMERSBY 0.33CL	2.30
VOLL DAMM 0.25CL	2.00
FREE DAMM 0.25CL	1.90
SUPER BOCK 0.33CL	1.90

## OTHERS DRINKS

MINERAL WATER 0.25CL	1.30
MINERAL WATER 0.50CL	1.90
MINERAL WATER 1LT	2.50
SPARKLING WATER 0.25CL	1.60
SODA 0.33CL	1.90
LEMONADE (JARRO)	7.50

## SANGRIAS



RED SANGRIA	3.00	12.00
WHITE SANGRIA	3.00	12.00
SPARKLING SANGRIA		16.00
ROSE WINE SANGRIA		18.00



VAT INCLUDED

